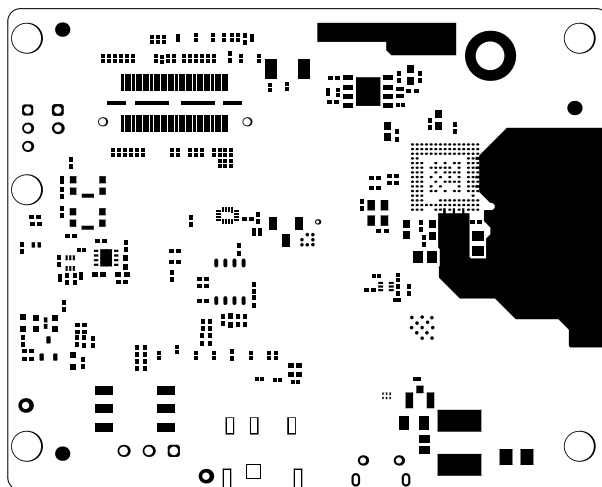
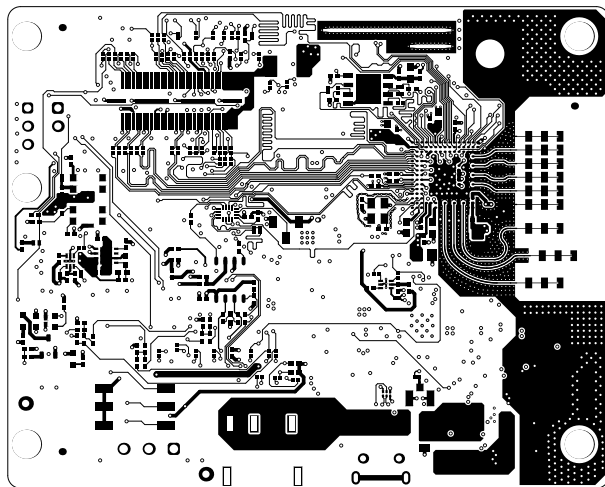


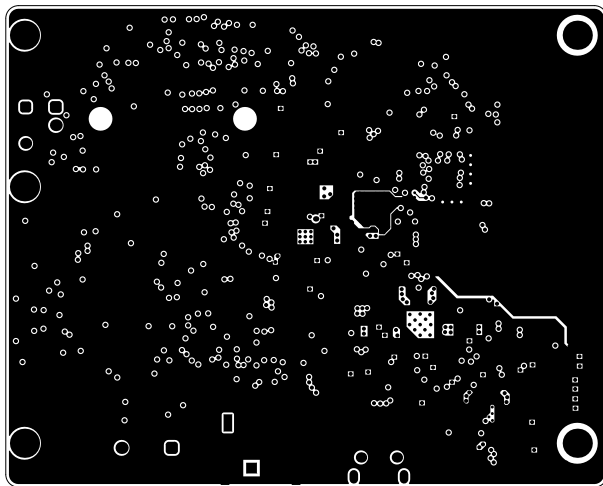
ALL ARTWORK VIEWED FROM TOP SIDE	BOARD #: PROC051	REV: C	SUN REV: Not In VersionControl
LAYER NAME = Top Overlay	TID #: N/A		
PLOT NAME = Top Overlay	GENERATED : 3/12/2019 11:25:17 AM		TEXAS INSTRUMENTS



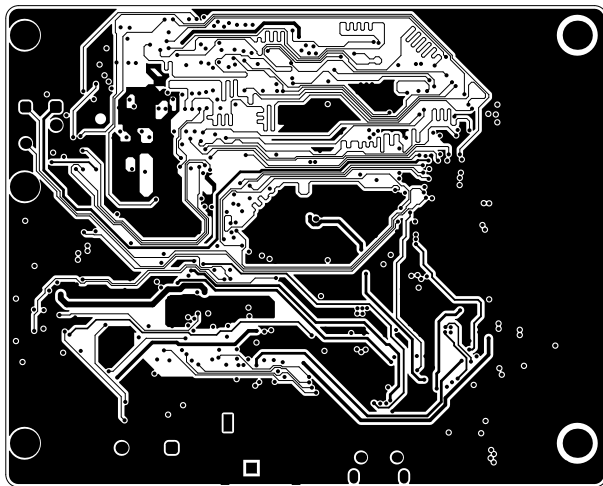
ALL ARTWORK VIEWED FROM TOP SIDE	BOARD #: PROC051	REV: C	SUN REV: Not In VersionControl
LAYER NAME = Top Solder	TID #: N/A		
PLOT NAME = Top Solder Mask	GENERATED : 3/12/2019 11:25:19 AM	TEXAS INSTRUMENTS	



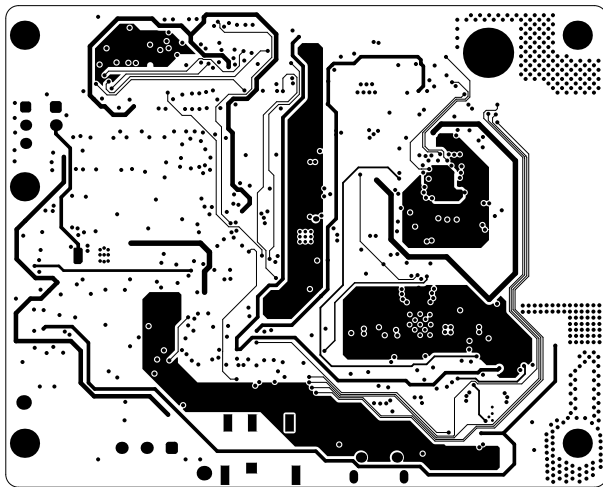
ALL ARTWORK VIEWED FROM TOP SIDE	BOARD #: PROC051	REV: C	SUN REV: Not In VersionControl
LAYER NAME = TOP	TID #: N/A		
PLOT NAME = Top Layer	GENERATED : 3/12/2019	11:25:21 AM	TEXAS INSTRUMENTS



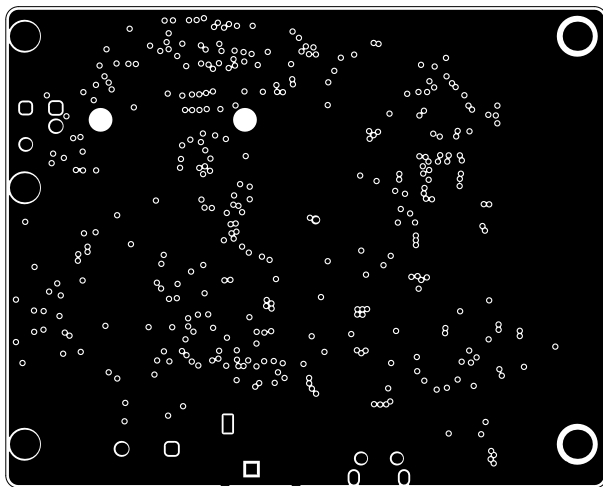
ALL ARTWORK VIEWED FROM TOP SIDE	BOARD #: PROC051	REV: C	SUN REV: Not In VersionControl
LAYER NAME = L2	TID #: N/A		
PLOT NAME = Signal 1	GENERATED : 3/12/2019 11:25:23 AM	TEXAS INSTRUMENTS	



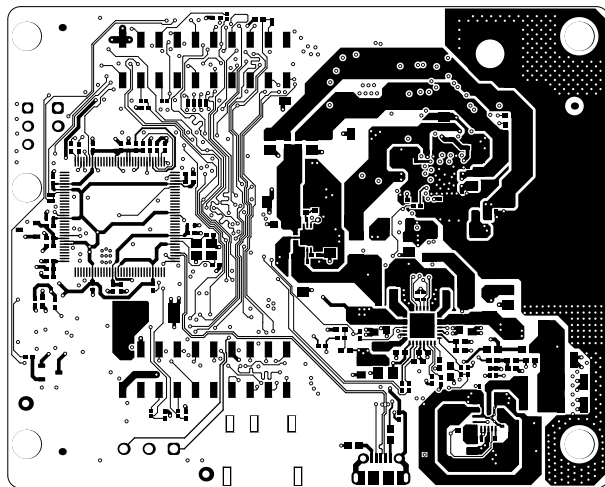
ALL ARTWORK VIEWED FROM TOP SIDE	BOARD #: PROC051	REV: C	SUN REV: Not In VersionControl
LAYER NAME = L3	TID #: N/A		
PLOT NAME = Signal 2	GENERATED : 3/12/2019	11:25:25 AM	TEXAS INSTRUMENTS



ALL ARTWORK VIEWED FROM TOP SIDE	BOARD #: PROC051	REV: C	SUN REV: Not In VersionControl
LAYER NAME = L4	TID #: N/A		
PLOT NAME = Signal 3	GENERATED : 3/12/2019	11:25:27 AM	TEXAS INSTRUMENTS

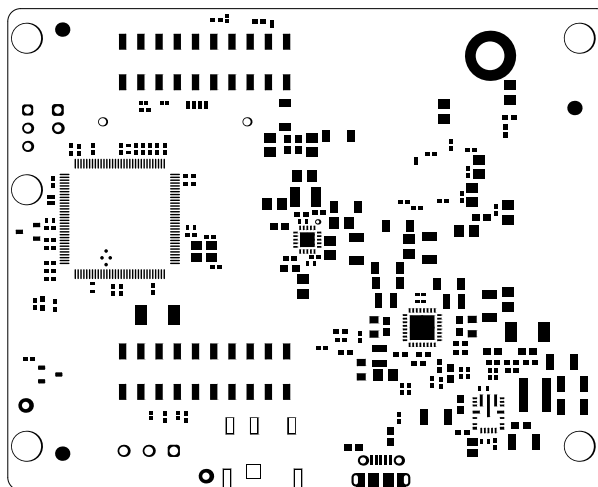


ALL ARTWORK VIEWED FROM TOP SIDE	BOARD #: PROC051	REV: C	SUN REV: Not In VersionControl
LAYER NAME = L5	TID #: N/A		
PLOT NAME = Signal 4	GENERATED : 3/12/2019 11:25:29 AM	TEXAS INSTRUMENTS	

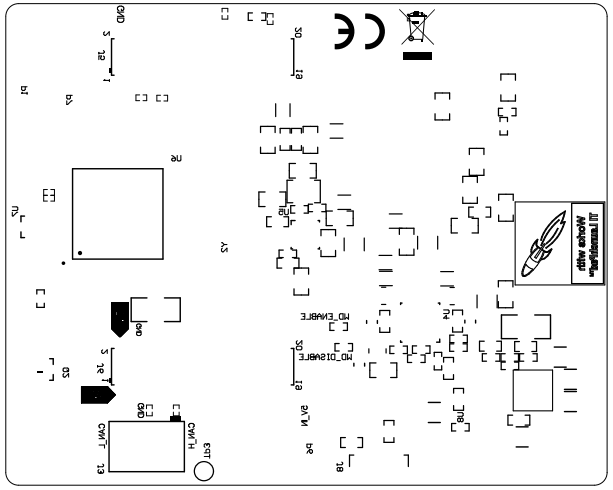


ALL ARTWORK VIEWED FROM TOP SIDE	BOARD #: PROC051	REV: C	SUN REV: Not In VersionControl
LAYER NAME = BOTTOM	TID #: N/A		
PLOT NAME = Bottom Layer	GENERATED : 3/12/2019 11:25:31 AM	TEXAS INSTRUMENTS	





ALL ARTWORK VIEWED FROM TOP SIDE	BOARD #: PROC051	REV: C	SUN REV: Not In VersionControl
LAYER NAME = Bottom Solder	TID #: N/A		
PLOT NAME = Bottom Solder Mask	GENERATED : 3/12/2019 11:25:33 AM	TEXAS INSTRUMENTS	



ALL ARTWORK VIEWED FROM TOP SIDE	BOARD #: PROC051	REV: C	SUN REV: Not In VersionControl
LAYER NAME = Bottom Overlay	TID #: N/A		
PLOT NAME = Bottom Overlay	GENERATED : 3/12/2019 11:25:35 AM	TEXAS INSTRUMENTS	

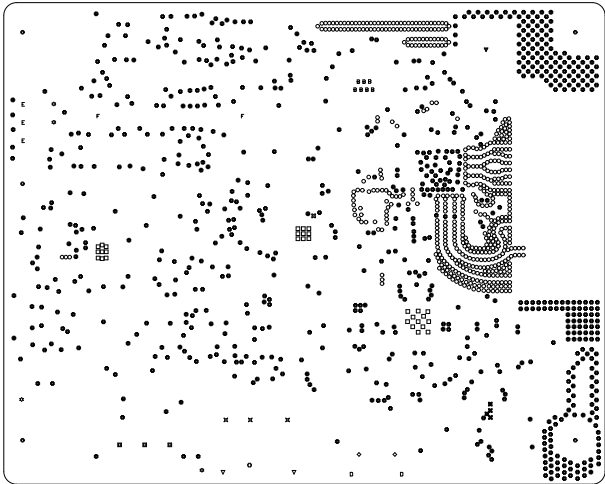
Symbol	Count	Hole Size	Plated	Hole Type	Drill Layer Pair	Pad Shape	Hole Length
□	30	7.87mil (0.200mm)	PTH	Round	TOP - BOTTOM	Rounded	-
✕	4	8.00mil (0.203mm)	PTH	Round	TOP - BOTTOM	Rounded	-
B	7	12.10mil (0.307mm)	PTH	Round	TOP - BOTTOM	Rounded	-
Φ	811	12.20mil (0.310mm)	PTH	Round	TOP - BOTTOM	Rounded	-
⊗	1	17.72mil (0.450mm)	PTH	Round	TOP - BOTTOM	Rounded	-
D	2	23.62mil (0.600mm)	PTH	Slot	TOP - BOTTOM	Rounded	51.18mil (1.300mm)
⊗	3	31.50mil (0.800mm)	PTH	Rectangle	TOP - BOTTOM	Rounded Rectangle	78.74mil (2.000mm)
▽	2	31.50mil (0.800mm)	PTH	Rectangle	TOP - BOTTOM	Rounded Rectangle	90.55mil (2.300mm)
◇	2	33.47mil (0.850mm)	PTH	Round	TOP - BOTTOM	Rounded	-
☆	4	40.00mil (1.016mm)	PTH	Round	TOP - BOTTOM	<Mixed>	-
F	2	40.16mil (1.020mm)	NPTH	Round	TOP - BOTTOM	Rounded	-
E	3	40.16mil (1.020mm)	PTH	Round	TOP - BOTTOM	<Mixed>	-
■	3	47.24mil (1.200mm)	PTH	Round	TOP - BOTTOM	<Mixed>	-
○	1	70.87mil (1.800mm)	NPTH	Rectangle	TOP - BOTTOM	Rounded Rectangle	71.00mil (1.803mm)
▼	1	157.48mil (4.000mm)	PTH	Round	TOP - BOTTOM	Rounded	-
○	5	160.00mil (4.064mm)	NPTH	Round	TOP - BOTTOM	Rounded	-
881 Total							

Slot definitions : Routed Path Length = Calculated from tool start centre position to tool end centre position.  
Hole Length = Routed Path Length + Tool Size = Slot length as defined in the PCB layout

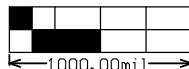
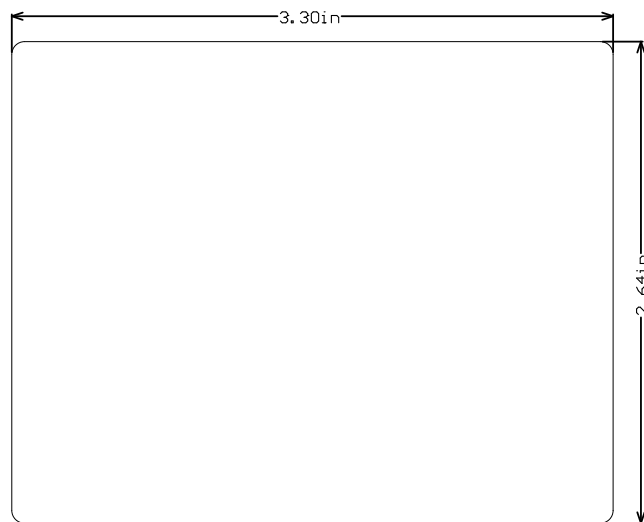
Drill Table  
FOR PTH +/- 3MIL  
FOR NPTH +/- 2MIL  
FOR 7.874MIL DRILL +0/-7.874MIL  
FOR 8MIL DRILL +0/-8MIL  
FOR 12.1MIL DRILL +0/-12.1MIL  
FOR 12.2MIL DRILL +0/-12.2MIL

Symbol	Count	Hole Size	Plated	Hole Type	Drill Layer Pair	Hole Length	Routed Path Length
○	529	5.90mil (0.150mm)	PTH	Round	TOP - L2	-	-
529 Total							

FOR 5.9MIL DRILL +0/-5.9MIL



ALL ARTWORK VIEWED FROM TOP SIDE	BOARD #: PROC051	REV: C	SUN REV: Not In VersionControl
LAYER NAME = Drill Drawing	TID #: N/A		
PLOT NAME = Drill Drawing	GENERATED : 3/12/2019 11:25:37 AM	TEXAS INSTRUMENTS	



ALL ARTWORK VIEWED FROM TOP SIDE	BOARD #: PROC051	REV: C	SUN REV: Not In VersionControl
LAYER NAME = M2 Board Dimensions	TID #: N/A		
PLOT NAME = Board Dimensions	GENERATED : 3/12/2019 11:25:47 AM	TEXAS INSTRUMENTS	